



100% ASBESTOS FREE

# DURA GREEN

Fiber Cement Sheets

# ADVANTAGES

**WEATHER  
PROOF**



**GOOD  
HANDLING  
CHARACTER-  
ISTICS**



**NON  
COMBUSTIBLE**



**ECONOMICAL  
COMPARED  
TO FIBER  
SHEETS**



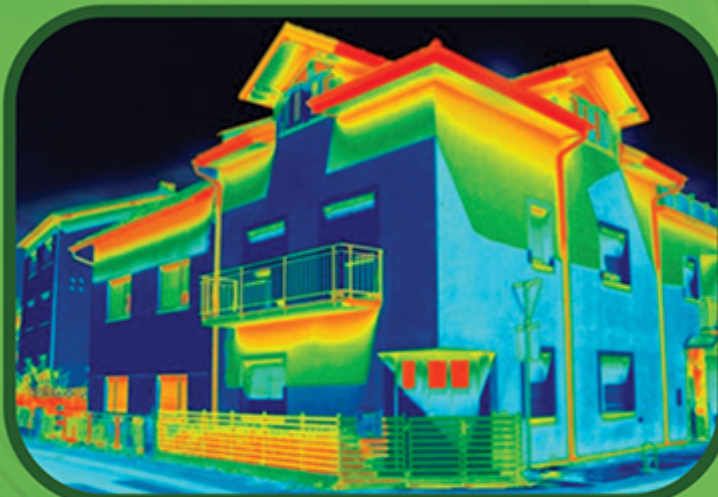
**EASY  
INSTALLATION**



**CORROSION  
FREE**



**GOOD  
THERMAL  
RESISTANCE**



**ENVIRONMENT  
FRIENDLY**



**GOOD  
HEAT  
RESISTANT**



**LOW NOISE  
DURING  
IMPACT  
OF RAIN**



# DURA GREEN

According to the World Health Organization (W.H.O.) Asbestos sheets are dangerous for human health and not good for environment. World Health Organization (W.H.O.) says that Asbestos Sheets releases such type of rays which are dangerous for health. Now a day's mostly big Companies including Medicine, Food & Textile Companies are being avoid to use Asbestos sheets on their shades and warehouses. We started to import Non Asbestos Sheets from the World biggest manufacture of Non Asbestos Sheets. That manufacture is using Japanese Fiber (Kuraray Japan Chemical Co.) Instead of Asbestos, These Sheets have their Properties:

1. Non Asbestos Cement Sheets are having good heat resistance
2. Very Safe for Human Health
3. Fresh Environment
4. Durable because of Japanies Fiber
5. Very easy to install
6. Economical & Low cost

## SPECIFICATIONS

1	SPECIFICATION TO WHICH IT CONFORMS	IS14870 :2000 (ISO-9933-1995(E))
2	PROFILE	BIGSIX
3	OVER ALL WIDTH	1100 mm
4	STANDARD LENGTHS	1520 TO 3050 mm
5	THICKNESS	6 mm To 7 mm
6	COLOUR	GREY OR COATED (RED, BLUE, WHITE, GREEN)
7	SURFACE TEXTURE	EXTERNAL SMOOTH SURFACE
8	NO. OF CORRUGATIONS	SIX
9	PITCH OF CORRUGATION	177 mm
10	DEPTH OF CORRUGATION	51 mm
11	BREAKING LOAD	>4300 N/ meter of width, when tested at 1100 mm
12	WIND LAOD (KG/M2)	span as per (ISO/BIS-CLASS-7) >200 KG/M2
13	PROST RESISTANCE	MEETS ISO-9933 CRITERIA
14	MNINMUM ROOF SLOPE	10 DEGREE
15	WATER PERMEABILITY	MEETS IS 14871
16	PURLIN	STEEL OR WOOD
17	THERMAL MOVEMENT	THERMAL MOVEMENT IS NEGLIGIBLE. HOWEVER MOVEMENT JOINTS SHOULD BE PROVIDED IN ASSOCIATION WITH THE STRUCTURAL FRAME WORK
18	SOUND INSULATION	24 TO 26 DB when tested in a critical frequency of 100- 3150 HZ
19	DIMENSIONAL STABILITY	2.5 TO 3.5 mm /m
20	STORED MOISTURE	<10%
21	FIRE PERFORMANCE	NON COMBUSTIBLE TO BS-476 PART 4

# CONTACT

## Head Office

Shop# B-16, Qazafi Market, Korangi no.06, Karachi (74900)

Muhammad Qasim (CEO) : 0332-8223931

Sheharyar Qasim ( Sales Director) : 0332-2223931

Shayan Qasim (Sales Manager) : 0333-2123931

[info@shayanqasimiron.com.pk](mailto:info@shayanqasimiron.com.pk) | [www.shayanqasimiron.com.pk](http://www.shayanqasimiron.com.pk)

## Branch # 1

Plot#54, Sector 17/A, Shah Latif Town, Near Pakistan

Machine Tool Factory (PMTF)

Sheharyar Qasim : 0332-2223931

## Branch # 2

Plot#86, Area 22-C, Shah Latif

(near Razzaqabad Police Training Centre)

Sheharyar Qasim : 0332-2223931

## Branch # 3

Sector 20/D, Opposite Mateen Complex near Fast University

Muhammad Qasim: 0332-8223931